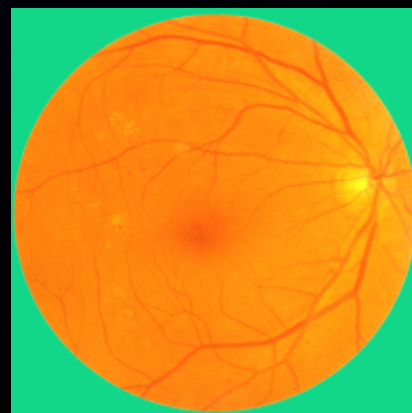
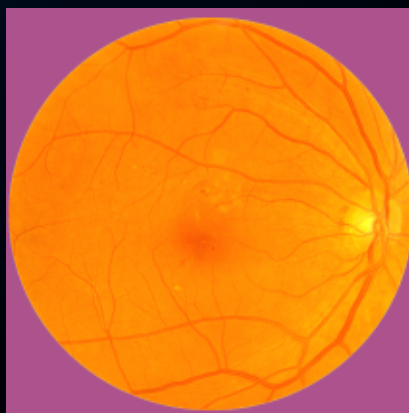
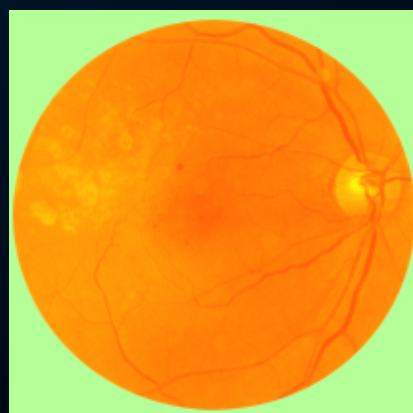


Diabetic Eye Disease:

Mrs Rehna Khan
explores the evidence
for current treatments
available for Diabetic
Macular Oedema



Other lesions: Prof Michel Michaelides and Dr James Tee - Retinitis Pigmentosa

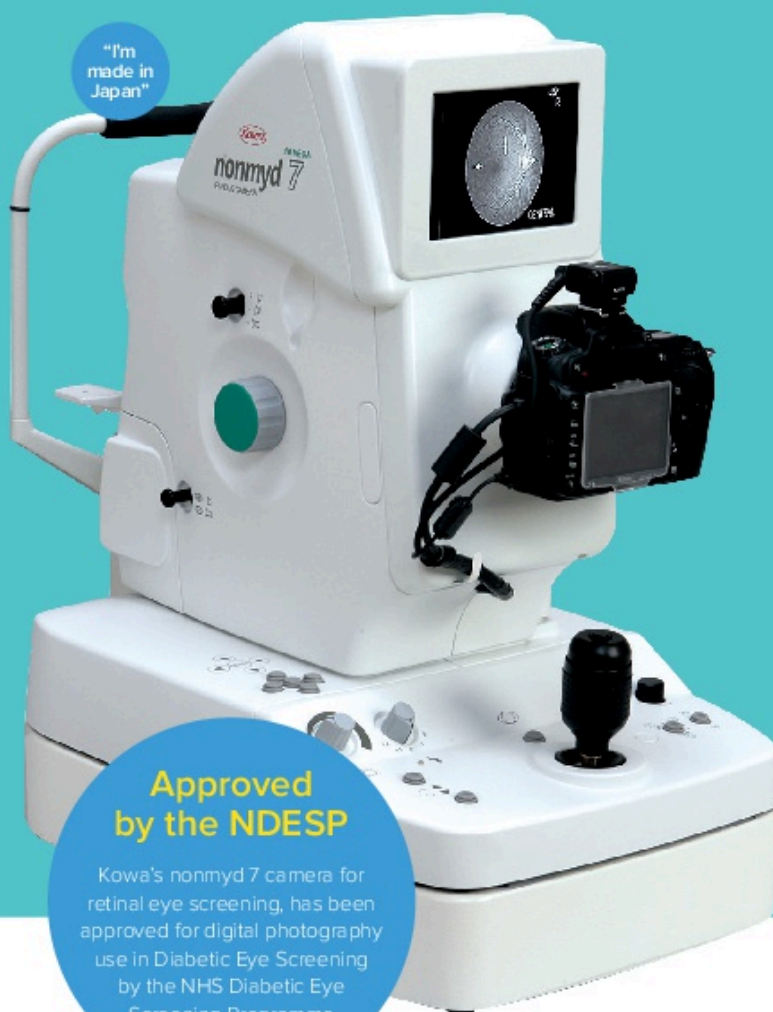
Spotlight on DESP: Inspirational work from Heart of England in Birmingham

Clinical Audit from St Thomas' Hospital Management of patients
with early DMO via Virtual SD-OCT clinics



nonmyd 7

Kowa's nonmyd 7 is first choice for digital photography use in **Diabetic Eye Screening**, available now from Sense Medical, Kowa's exclusive distributor in UK & Ireland.



With true optical magnification for enhanced imaging (45°/ 20°), capturing highly detailed pathology of the Retina, enabling you to offer the ultimate in patient care in three easy steps – simply align, focus and shoot.

- Fully compatible with third party Diabetic Eye Screening software / Grading software
- Modern compact design
- Full manual focus
- Durable, robust build quality for satellite screening
- Japanese manufactured optics for optimum performance
- True optical magnification (45°/20°)
- Latest Nikon 24.1MP camera
- Compatible with Windows®7 & 8.1.

Sense Medical offer a full range of non-mydriatic cameras and comprehensive service packages. Our Engineers are fully qualified and trained by Kowa in Japan.

**Approved
by the NDESP**

Kowa's nonmyd 7 camera for retinal eye screening, has been approved for digital photography use in Diabetic Eye Screening by the NHS Diabetic Eye Screening Programme

YOUR VISION OUR TECHNOLOGY

For more information or to arrange a trial please contact
Sense Medical on 01276 479068
or e: info@sensemecol.co.uk

DiabeticEyeJournal

EDITORIAL

DiabeticEyeJournal has been through time of change and adaptation. It was a painful, but a positive and growing process. Growing in the sense of expanding the range of topics covered, reflecting the demand of our audience, increasing our journal's volume, and integrating with BARS.

In this issue amongst other subjects we are bringing you topical articles that include:

Mrs Rehna Khan Consultant ophthalmologist from Calderdale & Huddersfield NHS trust who is introducing Current treatment options and DMO pathway for patients with Diabetic Macular Oedema.

The increase in diabetes resulted in large number of M1 patient referrals to already busy hospital eye services. As a result department of Ophthalmology from St Thomas' Hospital in London have undertaken a Clinical audit of a virtual early DMO clinic for the management of Diabetic patients to evaluate whether such a system can alleviate the volume.

Insight into inherited retinal disorder - Retinitis Pigmentosa by Prof Michel Michaelides and Dr James Tee who are based at MEH and UCL Institute of Ophthalmology and are specialising in this field.

Changes within the BARS organization that are reflecting changes happening nationally within DESPs and how the organization supports the workforce involved in Diabetic Eye Screening.

Enjoy your Spring DEJ. You can receive it free of charge as a BARS member. For further information visit www.eyescreening.org.uk

IN THIS ISSUE

5 COURSES AND CONFERENCES

6 DIABETIC EYE DISEASE

Current treatment options for patients with Diabetic Macular Oedema by Mrs Rehna Khan from Calderdale & Huddersfield NHS trust

12 SPOTLIGHT ON DESP

From Birmingham, Solihull and the Black Country

20 BARS

Don't miss upcoming changes

22 OTHER LESIONS

Dr James Tee and Prof Michel Michaelides explore topic of Retinitis Pigmentosa

28 NDESP UPDATE

30 DIABETES UK

Dr Susan Aldridge Focuses on Integrated Diabetes Care

34 CLINICAL AUDIT

Managing Patients with early Diabetic Maculopathy via Virtual SD-OCT clinics

PUBLISHER BARS Council

PRODUCTION TEAM

Mark Histed Chairman of BARS

Laura Tinsley Central Mersey

Jacqueline Mansell

EDITOR

Iveta Olejkova NCL DESP

ONLINE VERSION

www.diabeticeyejournal.org

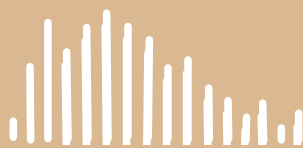
www.eyescreening.org.uk

COMMENTS and CONTRIBUTIONS

info@diabeticeyejournal.org

VOLUNTEERS/ PROOF READ

Elisabeth Murray NCL DESP



Join us at our Annual Conference

bars

British Association of Retinal Screening

this year from Bristol



24th - 25th September: Marriott City Centre

"Registration for the 2015 BARS Conference is now open. Book your place via the BARS website www.eyescreening.org.uk"

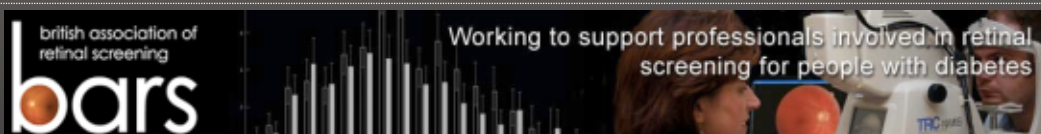
A number of high profile speakers are being lined up to share their knowledge and expertise. Amongst other topics we shall be exploring:

- treatments for diabetic macular oedema by Consultant Ophthalmologist **Mrs Rehna Khan** from Calderdale & Huddersfield NHS Trust
- training and education update from **Mr Patrick Rankin** from Health Education England
- overview of Glaucoma by Consultant Ophthalmologist and Glaucoma Lead **Mrs Bola Odufuva** from RFH NHS Foundation Trust
- **Paul Galsworthy** from the Birmingham Heartlands DESP will be speaking about the LEOPARD Project which has established the first DESP in Ethiopia.
- and much, much more **not to be missed**

Other speakers will be announced very shortly on the BARS website at www.eyescreening.org.uk, where you can book your place.

Apart from high profile speakers Conference offers:

- great opportunity to network with others in similar roles, share good practice, receive needed support to improve or expand your skills and career prospects
- take part in the association's AGM, and vote on proposals to shape our future
- evening of fun and entertainment



DiabeticEyeJournal is published and produced by BARS with support of its founders from North Central London Diabetic Eye Screening Programme.

Although every effort has been made to ensure the accuracy of the contents, the publisher can not accept any responsibility for errors or omissions, or for any matters in any way arising from the publication of Journal's context. However we will happily pass relevant comments to authors of published articles. Copyright Diabetic Eye Journal 2015 ©, all rights reserved, Diabetic Eye Journal ® - registered trademark.

Courses and Events

Training Courses at Retinopathy Screening Centre, Heartlands Hospital, Birmingham

DR Screener Course: 21 to 22 April 2015

Advanced DR Grader Course: 21 to 23 September

OCT Course: 03 to 01 October 2015

DR Grader Course: 19 to 23 October 2015

To register: <http://www.retinalscreening.co.uk>

Optometric Management of Diabetic Eye Disease

School of Health Sciences

City University, London EC1V 0HB

20th and 21st April 2015

To register: <http://www.city.ac.uk/courses/cpd>

Diabetic Retinopathy Screening Training

Clinical Tutorial Centre (CTC)

Moorfields Eye Hospital, London EC1V 2PD

20th and 21st October 2015

To register: <http://www.readingcentre.org/Training>

Diabetic Retinopathy Module in MSc Health Sciences

Warick University, Warick Media School

Coventry CV4 7AL

Tel: 02476 574880

To find out more: <http://www2.warick.ac.uk>

Diabetes UK – Diabetes Awareness Training

Various dates and in-house training available.

One-day course accredited by the Royal College of Nursing (RCN)

Phone: 020 7424 1000

Contact enquiry: commissioning@diabetes.org.uk

Eye to Eye Fundraiser Day

Moorfields Eye Charity - Moorfields Hospital to London Eye Walk

Sunday 22nd March 2015

Tel: 020 7566 2486

<http://www.moorfields.nhs.uk/eye2eye>

Conferences

National Diabetic Eye Screening Conference

Friday 24th April 2015

Venue: Royal Society of Medicine

1 Vimpole Street, LONDON W1G 0AE

To register: ophthalmology@rsm.ac.uk

8th All-Ireland Conference of the Primary Care Diabetes Society

Saturday 09 May 2015

Venue: Crowne Plaza Hotel in Northwood

To find out more: www.diabetesonthenet.com

Diabetes complicated by obesity

Thursday 21 May 2015

Venue: National Motorcycle Museum in Birmingham

To find out more: www.diabetesonthenet.com

25th EASDec Conference

Eye Complications Study Group

26th to 28th June 2015 Thursday

Venue: Turin, Italy

To register: www.easdec.org

51st EASD Annual Meeting

European Association for Study of Diabetes

14th & 15th September 2015

Venue: Stockholm, Sweden

To register: www.easd.org

BARS Annual Conference

Venue: Marriott Hotel in Bristol

24th & 25th September 2015

To register: www.eyescreening.org.uk

EVER 2015 Congress

The European Association for Vision and Eye Research

Venue: Nice, France

7th to 10th October/2015

To register: www.ever.be



Fully CAP certified diabetic eye
screening software







Health Information
Systems (UK) Limited



Diabetic Eye Screening

- *Common Pathway Compliant*
- *Can be integrated with  Diabetes Management &  Medical Retina (or linked to Medisoft)*
- *Comprehensive failsafe techniques*
- *Patient workflows making system intuitive to use*
- *Team experienced in importing legacy data and images from other systems*
- *Full national reporting capability*
- *Query Engine for ad-hoc reporting requirements*



Diabetic Eye Screening is part of the Vector Long Term Care / Chronic Disease Management EPR platform. Other disease areas include Diabetes Management, Endocrinology, Lipids, Sickle Cell, Medical Retina, AMD, Hypertension, Rheumatology, Podiatry, and Cardiac Rehab

Please contact Steve Courtney
steve.courtney@hisvector.com
Mob: 07768 964689



Diabetic Eye Screening Services

Call and Recall • Imaging • Grading
Training • Managed Services

CQC Registered ISO Certified

Head Office: Brook House, 501 Crewe Road, Wheelock, Sandbach, Cheshire, CW11 3RX

email: info@1stretinalscreen.com

web: www.1stretinalscreen.com

telephone: +44 (0) 1270 32 32 00

fax: +44 (0) 1270 76 50 02



Your choice is clear

TRC-NW8



3D OCT-1 Maestro



3D OCT-2000



Probably
the widest
range of
Fundus cameras
approved
for diabetic
screening

TRC-NW400



3D OCT-2000FA+



TRC-NW8F



TRC-NW8FA+



For more information, contact Topcon today

TOPCON GB Limited

- t: 01635 551120
- medical@topcon.co.uk
- www.topcon-medical.co.uk

TOPCON IRELAND

- t: 01897 5900
- medical@topcon.co.uk
- www.topcon-medical.ie

 **TOPCON**