

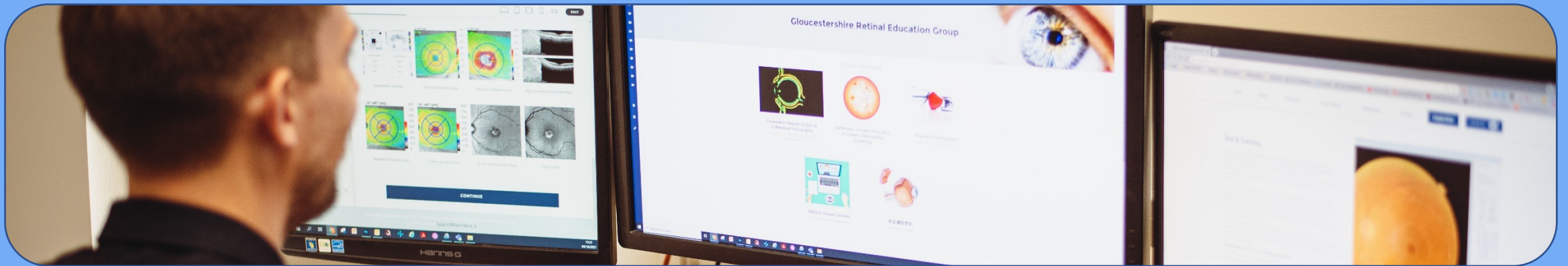






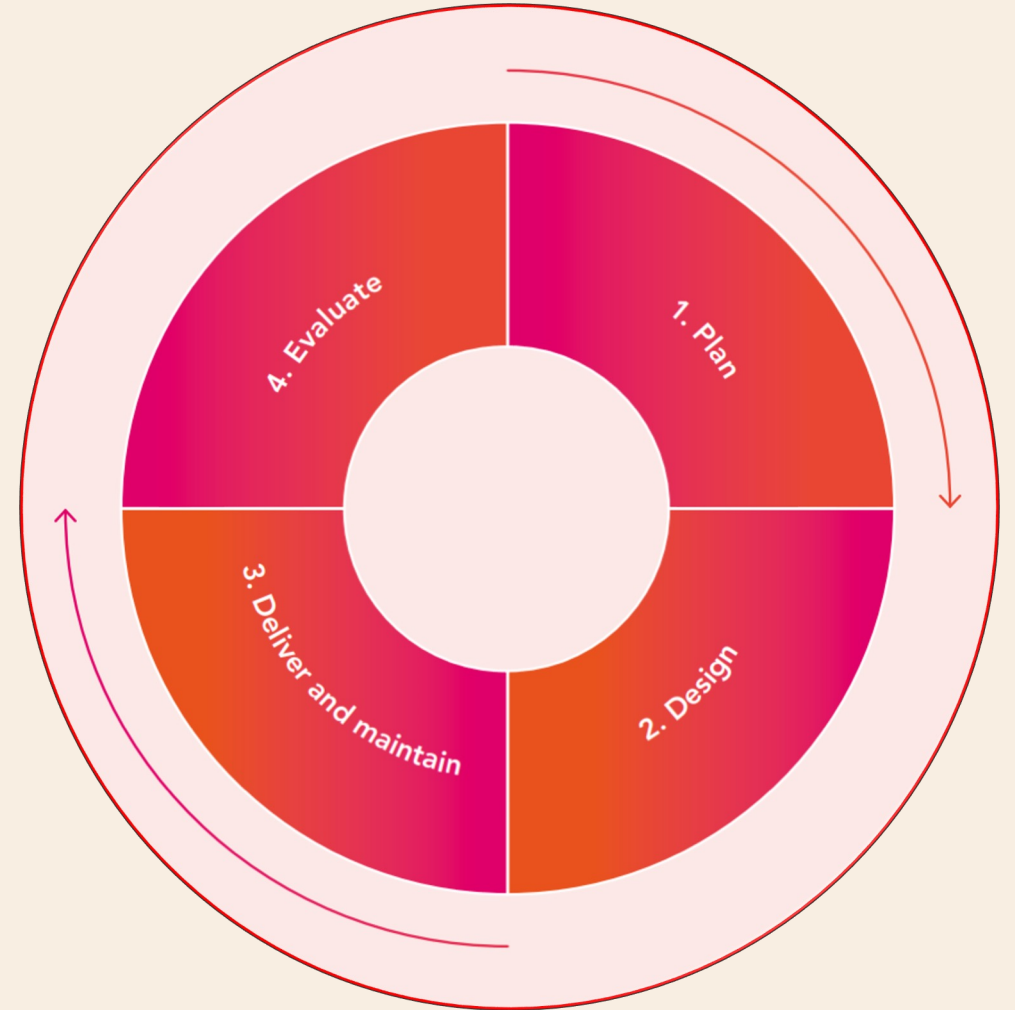
# GLOUCESTERSHIRE RETINAL EDUCATION GROUP

*experts in specialist ophthalmic education*



**‘Our training and education strategies are developed through research and experience. They are learner-focused, to ensure they are concentrated on the needs of the student.’**

*We listen, we action*





# TEAM



**15+ members of staff**

## CLINICAL DIRECTOR

**Prof Peter Scanlon**

## MANAGEMENT TEAM

**Clare Waite**  
**Rosalyn Painter**  
**Steve Aldington**

## CONTENT TEAM

**HSD Team**  
*Assessors, Coordinators, IQAs*  
**Subject Matter Experts**  
*Ophthalmology, optometry, OI and more*  
**Assessors**  
*Ophthalmic imaging, diabetic retinopathy, OCT interpretation*

## ELEARNING & WIDER TEAM

**Learning Technologists**  
**Content Designers**  
**Video & Image Specialists**  
**Illustrators**  
**Administrators**



# WHAT DO WE DO?

**EDUCATE**

through design and build of quality eLearning projects.

**VALIDATE**

through quality assurance and assessment processes.



# HOW DO WE DO IT?

An NHS education group with strong links to many Gloucestershire Hospital departments



**Ophthalmology services**

*Inc Optometry & Orthoptics*



**Ophthalmic Imaging services**



**Gloucestershire Retinal Research Group (GRRG)**



**Diabetic Eye Screening & Grading Programme (GDESP)**



**Medical Photography**



# WHO ARE OUR LEARNERS?

Ophthalmic Imagers

Optometrists

Screeners

Opticians

Clinical Application  
Specialists

Ophthalmic  
Technicians

DES Administrators

Medical  
Photographers

Nurses

Orthoptists







# WHAT COURSES DO WE OFFER?

**ACCREDITED QUALIFICATIONS**



**GREG ONLINE COURSES**



**CLASSROOM-BASED TRAINING**



## Accredited Qualifications:

**Pearson >**

**Level 3 Dip for Health Screeners**



**University of Gloucestershire >**

**Cert HE in Diabetic Retinopathy Screening**

*\*not relevant to those who have completed the L3 HSD*



**Foundation Degree in Optical Coherence Tomography**

*YEAR 1 > Cert HE in OCT Capture*

*YEAR 2 > Uni Dip in OCT Interpretation*

**BSc (Hons) Healthcare Science (Ophthalmic Imaging)**



**Recognised qualification certificate on completion**

# eLearning

*Learning achieved by delivery of educational content and instruction through the internet.*

Distance Learning:

Anatomy of the Eye (level 1 and level 2)

Features of Diabetic Retinopathy

OCT Interpretation Modules

Vision Science

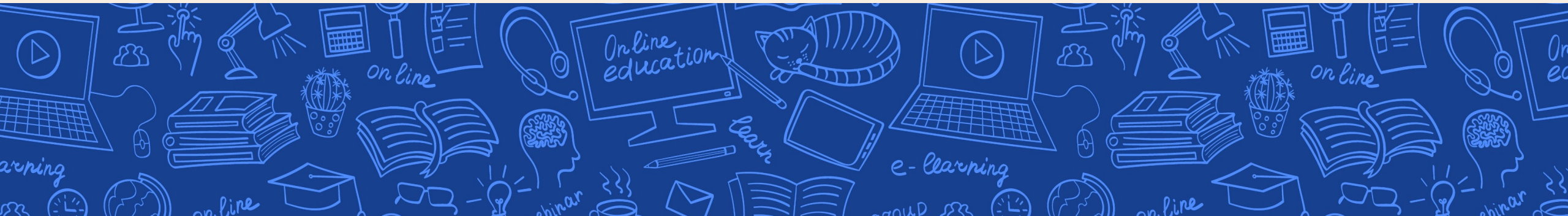
Ophthalmic Specialty Courses

OCT in Digital Surveillance

OCT Capture

Diabetic Retinopathy Grading

Laser in Ophthalmology Training



# Anatomy of the Eye (level 1 and level 2)

4 week, distance-learning

Systematic approach to anatomy teaching

End of course exam

Certificate of completion

The screenshot shows a web-based learning interface. On the left is a vertical navigation menu with a search icon at the top. The menu items include: 'Introductory Course: Anatomy of the Eye', 'COURSE OVERVIEW', 'Getting started', 'Aims and Objectives', 'Introduction', 'SECTION ONE', 'External Structures of the Eye', 'External Structures of the Eye (continued)', 'Section 1: Knowledge checks', 'SECTION TWO', 'Internal Structures of the Eye', 'Internal Structures of the Eye (continued)', 'Section 2: Knowledge checks', 'SECTION THREE', 'Internal Organs of the Eye', 'Internal Organs of the Eye (continued)', 'Section 3: Knowledge checks', 'SECTION FOUR', 'Anterior Segment', 'Anterior Segment (continued)', 'Section 4: Knowledge checks', 'CONCLUSIONS', and 'Conclusion'. The main content area has a gold header with the title 'LAYERS OF THE EYE'. Below the header, it states: 'It is helpful to understand that each eye houses the following parts:'. This is followed by a list of 'Three coating layers: the outer, middle and inner coat.':

- Fibrous (tunic)**  
This is the outermost layer, and consists of the sclera and cornea.
- Vascular (tunic) (also known as uveal tract or uvea)**  
This lies underneath the fibrous layer, and consists of the choroid, ciliary body and iris.
- Inner (coat)**  
This is formed by the retina, which is the light detecting component responsible for the perception of images (vision).

Below this text is a grey header for 'FIBROUS LAYER' and 'SCLERA AND CORNEA'. At the bottom, there are two diagrams: a realistic illustration of a human eye and a schematic cross-section of the eye. A legend indicates that the blue color represents the 'Sclera' and the green color represents the 'Cornea'.

# Features of Diabetic Retinopathy

## 4 week, distance-learning

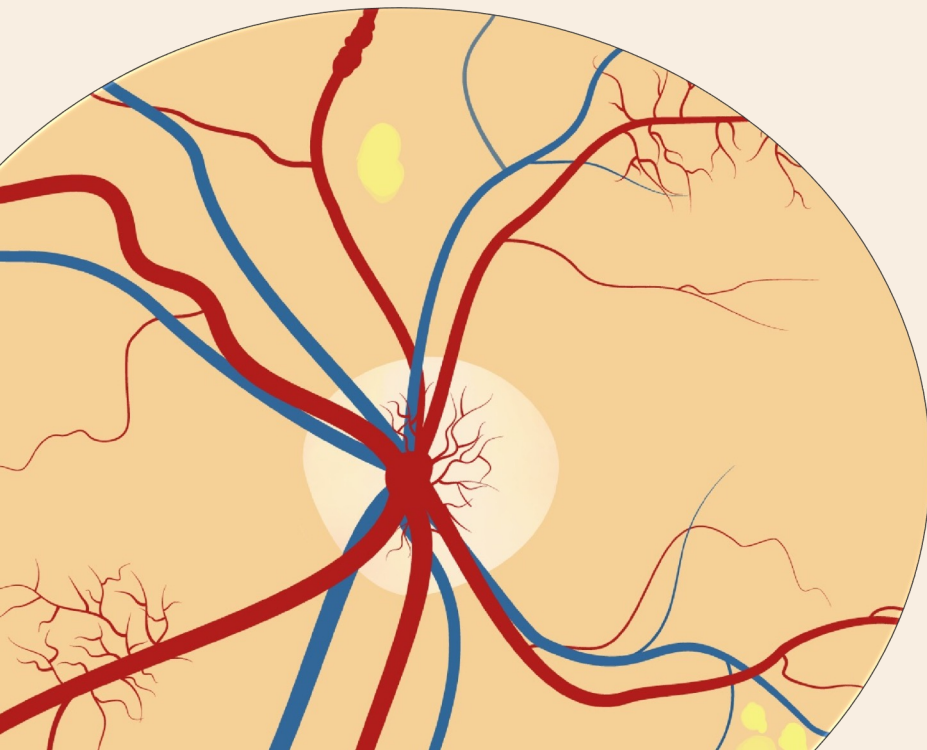
*Introduction to Features of DR*

*Features of non sight-threatening DR (NSTDR)*

*Features of sight-threatening DR (STDR)*

End of course exam

Certificate of completion



**Introductory Course: Features of Diabetic Retinopathy (DR)**  
21% COMPLETE

▼ COURSE OVERVIEW

- Getting started ✓
- Aims and Objectives ✓
- Introduction ✓
- ▼ SECTION ONE - INTRODUCTION TO FEATURES OF DR
  - Introduction to Imaging the Eye ○
  - Classification of Diabetic Retinopathy ○
  - NSTD vs. STDR ○
- ▼ SECTION TWO - FEATURES OF DR: NON-SIGHT THREATENING (NSTDR)

Before we look at the classification and clinical features of DR, we are going to answer the following questions based on the key components of imaging the human eye, and view some useful definitions.

- *What are 'normal' features of the eye?*
- *Where does DR present in the eye?*
- *How is DR recorded and monitored?*

**CONTINUE**

## OCT Interpretation Modules

**8 week, distance-learning**

*Diabetic Retinopathy*  
*Glaucoma*  
*AMD, CSR & Choroidal Conditions*  
*Retinal Vascular Disorders & Uveitis*  
*OCT-Angiography*  
*Neuro-Ophthalmology*  
*Paediatric & Inherited Conditions*

End of course exam  
Certificate of completion

## Vision Science

**8 week, distance-learning**

*(can be completed individually over 2 weeks)*

*Visual Pathway*  
*Visual Acuity*  
*Visual Fields*  
*Testing Colour Vision & Pupil Size*

Short online test  
Certificated by GREG

## Ophthalmic Specialty Courses

**1-2 hour, distance-learning**

*Glaucoma & Glaucoma Mimics*  
*AMD & OCT*  
*Papilloedema or Pseudopapilloedema?*  
*Common Vitreoretinal Conditions*  
*Pigmented Fundus Lesions*  
*Peripheral Retinal Lesions*

Short online test  
Certificated by GREG

## OCT in Digital Surveillance

### 5 week, distance-learning

#### Learning Outcomes;

*Recognise the importance of the pathways and protocols*

*Demonstrate knowledge of retinal anatomy*

*Understand the different types of OCT scans & image quality factors*

*Understand how OCT is used in monitoring DMO*

*Identify other conditions in OCT*

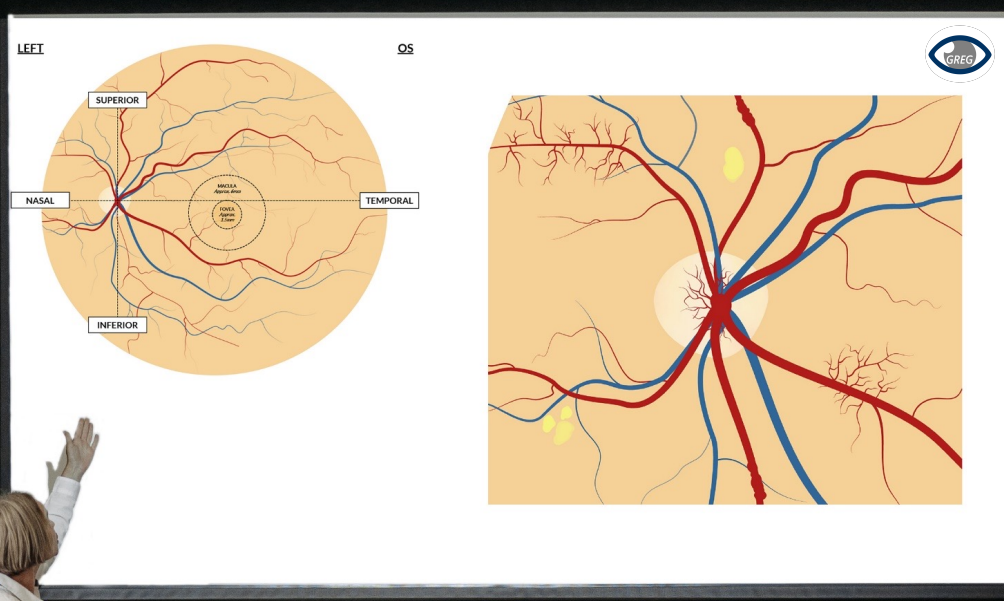
End of course exam

Certificated by GREG





*Always a place  
for face-to-face*



## CLASSROOM-BASED LEARNING

INTRODUCTION TO GRADING

ADVANCED GRADING

## PRE-LEARNING

ASSESSMENTS

GUIDED SUPPORT

ONLINE QUIZ

INTERACTIVE TRAINING

LECTURES



# WHO ARE OUR CLIENTS?



## QUALITY ASSURANCE ASSESSMENTS

Qualitative assessment  
Quantitative assessment  
Validate quality of a variety of image sets within  
ophthalmic imaging

## BESPOKE PROJECTS

Open to dialogue on bespoke eLearning or quality  
assurance projects  
Currently running various outputs for clients in the field  
of ophthalmology internationally

**International healthcare organisations**

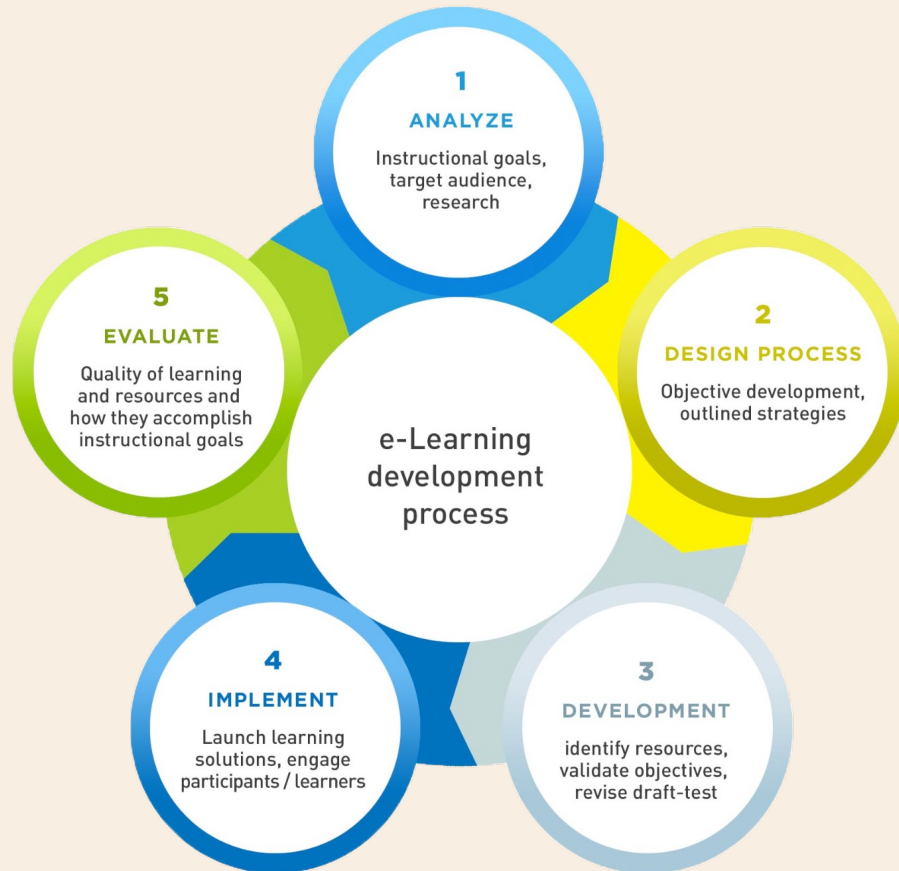
**UK ophthalmology departments**

**Medical device manufacturers**





# WHAT DOES STUDYING WITH US LOOK LIKE?



Variation of learning techniques

Clear learning outcomes

Learner-centred content

24/7 access to learning

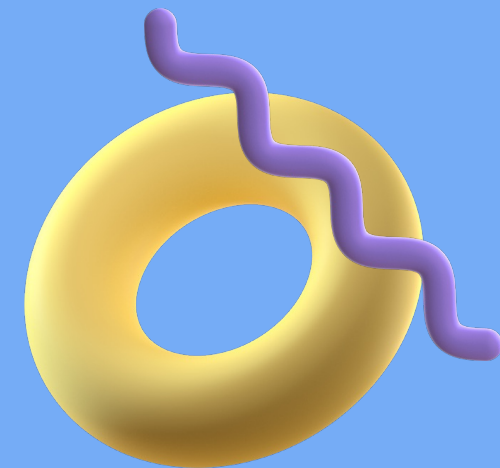
Support team available



We're an open, friendly group, please get in touch with questions, ideas or projects you'd like to discuss

[paul.dimmock@nhs.net](mailto:paul.dimmock@nhs.net)

[ghn-tr.drsadministrator@nhs.net](mailto:ghn-tr.drsadministrator@nhs.net)



Online  
handbook



[www.gregcourses.com](http://www.gregcourses.com)



Follow us on LinkedIn; @GREGQualifications