



Case Study: Things are not  
always what they seem

“I thought it had to be a  
detached retina and sent it to  
A&E...

...but what else could it be?”

Case Study:

82 year asymptomatic male

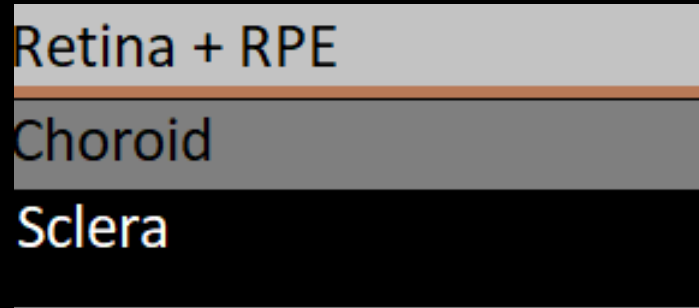
Poor historian: Known glaucoma.

Recent procedure on eye

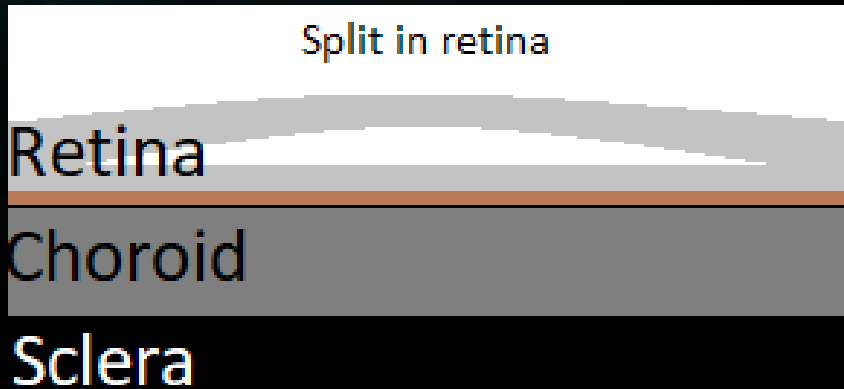


# Differential Diagnosis of a detachment:

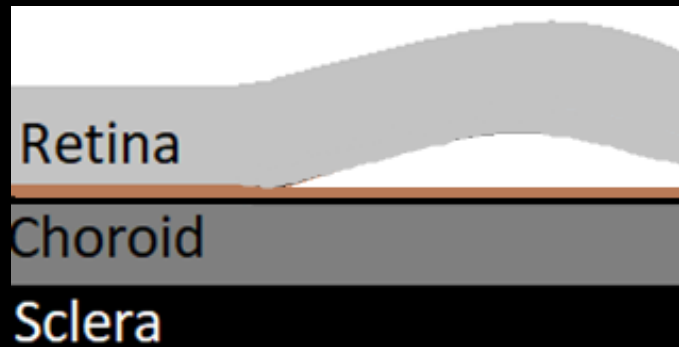
Normal



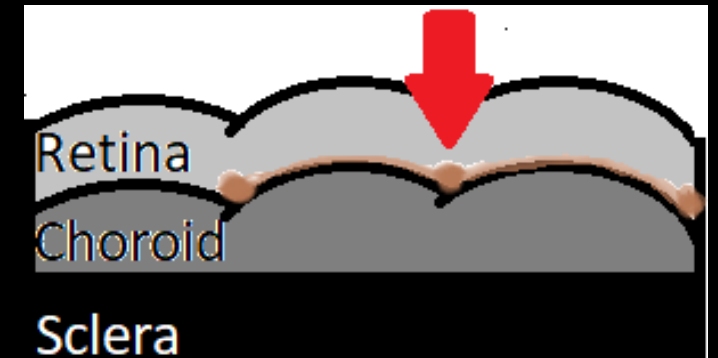
1. Retinoschisis



2. Detached Retina

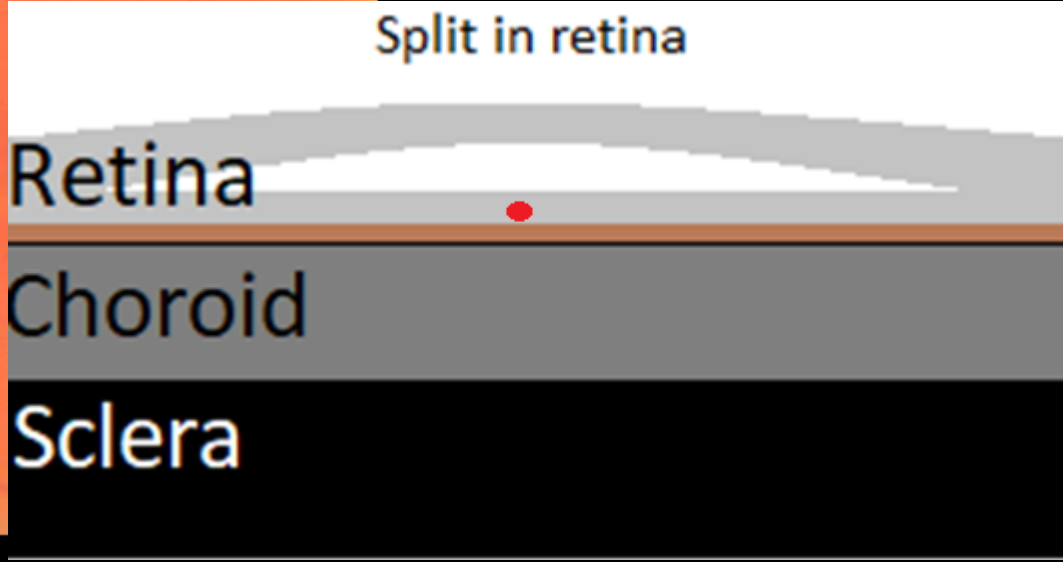


3. Choroidal Fold





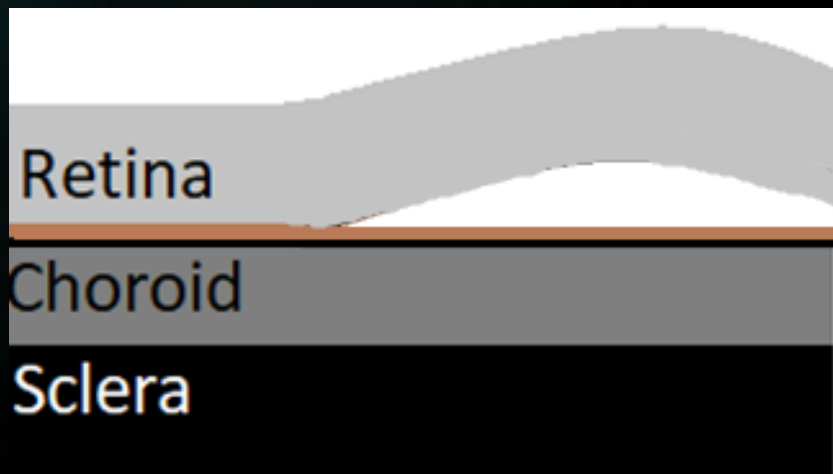
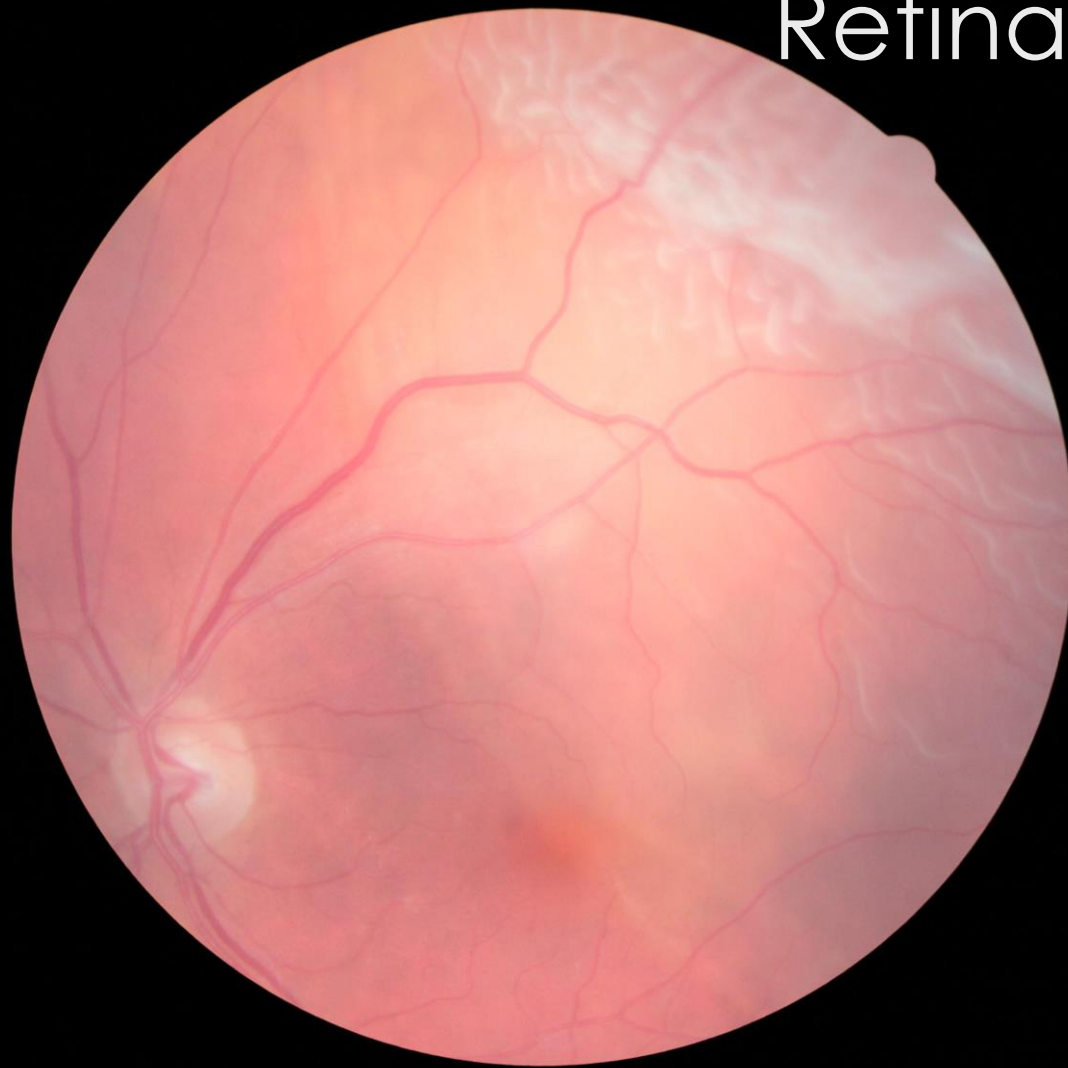
# 1. Retinoschisis

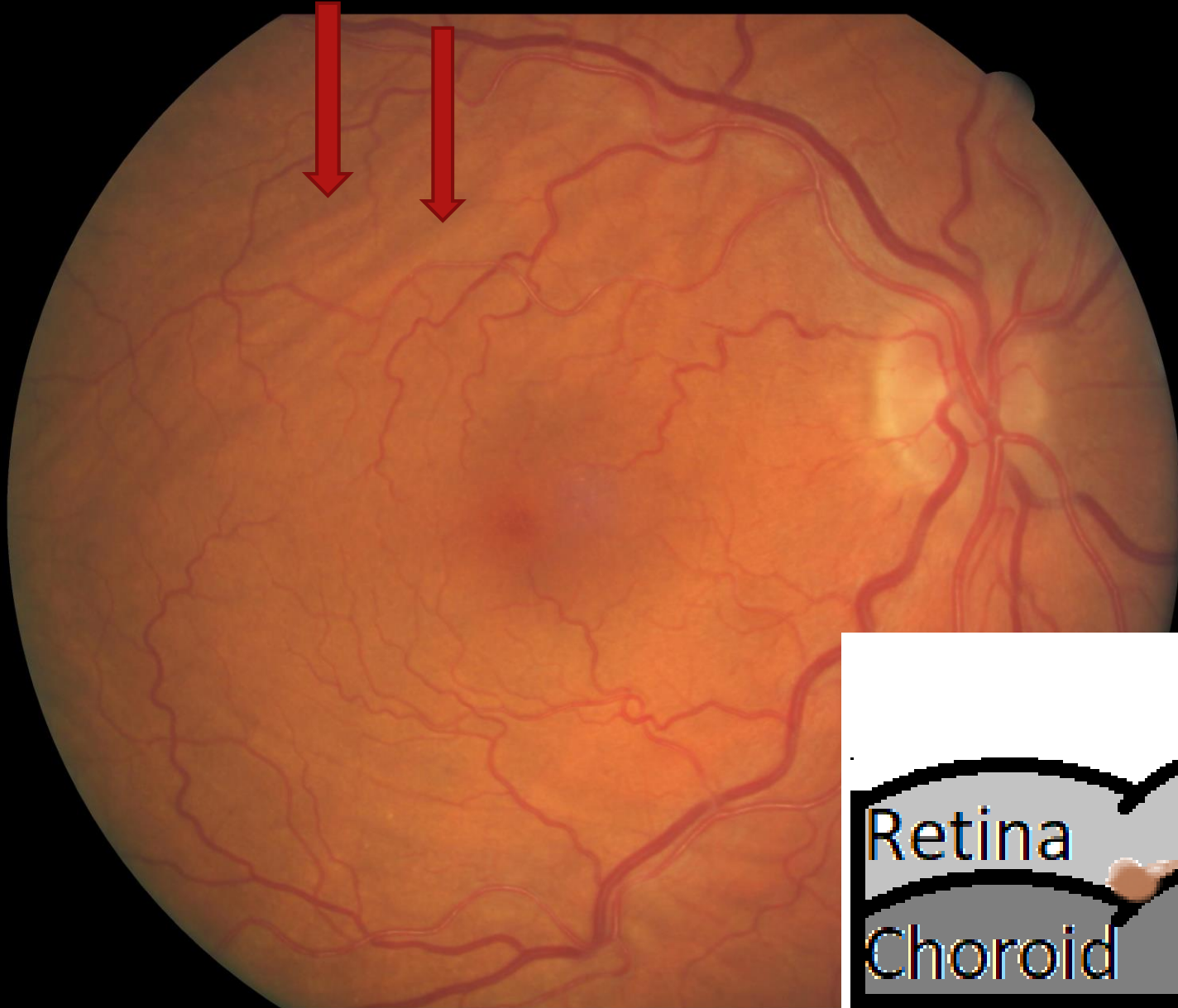




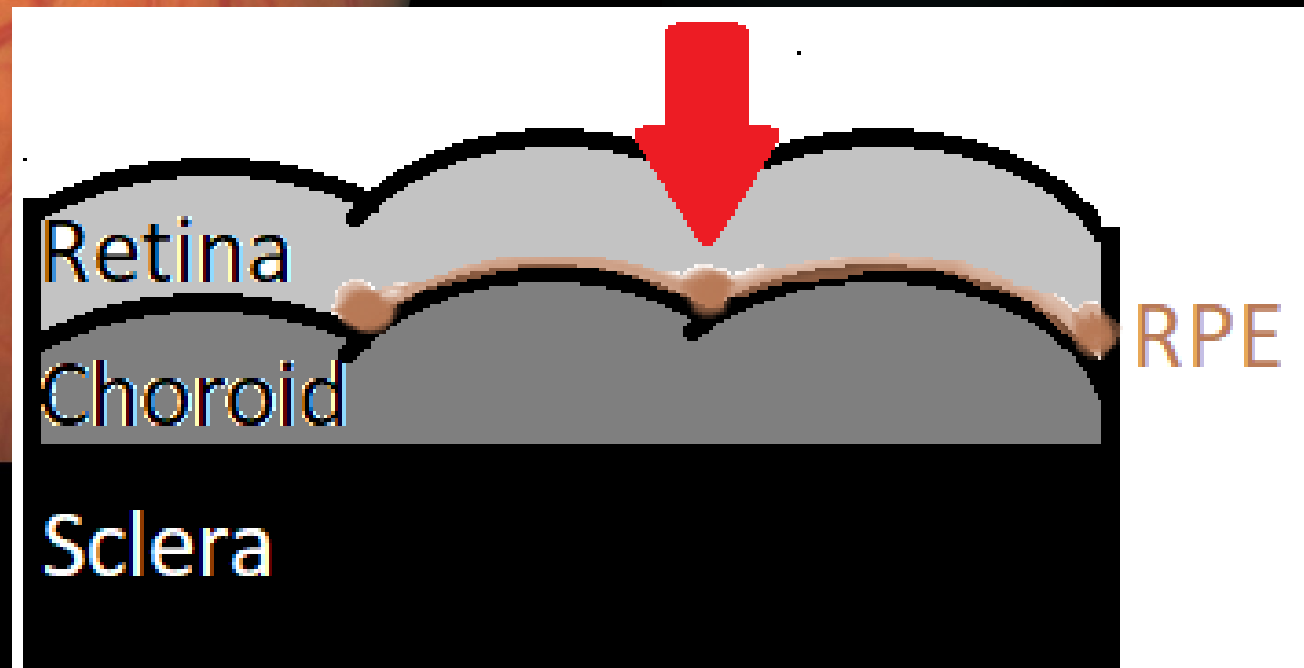


2. Detached Retina





3. Choroidal  
Fold



# Mystery solved:

- ▶ A&E noted choroidal folds secondary to hypotony (IOP 4).
- ▶ Patient was 6 weeks post trabeculectomy surgery.
- ▶ A&E Advised him to keep upcoming appointment with glaucoma team.
- ▶ Key points to consider: History / Colour of retina / vessels in focus / Location of lesion