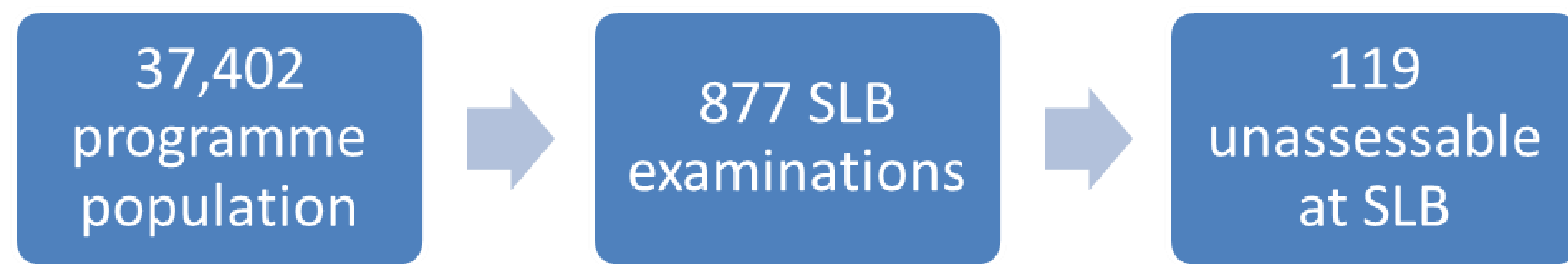


Unassessable at SLB: reasons and outcomes

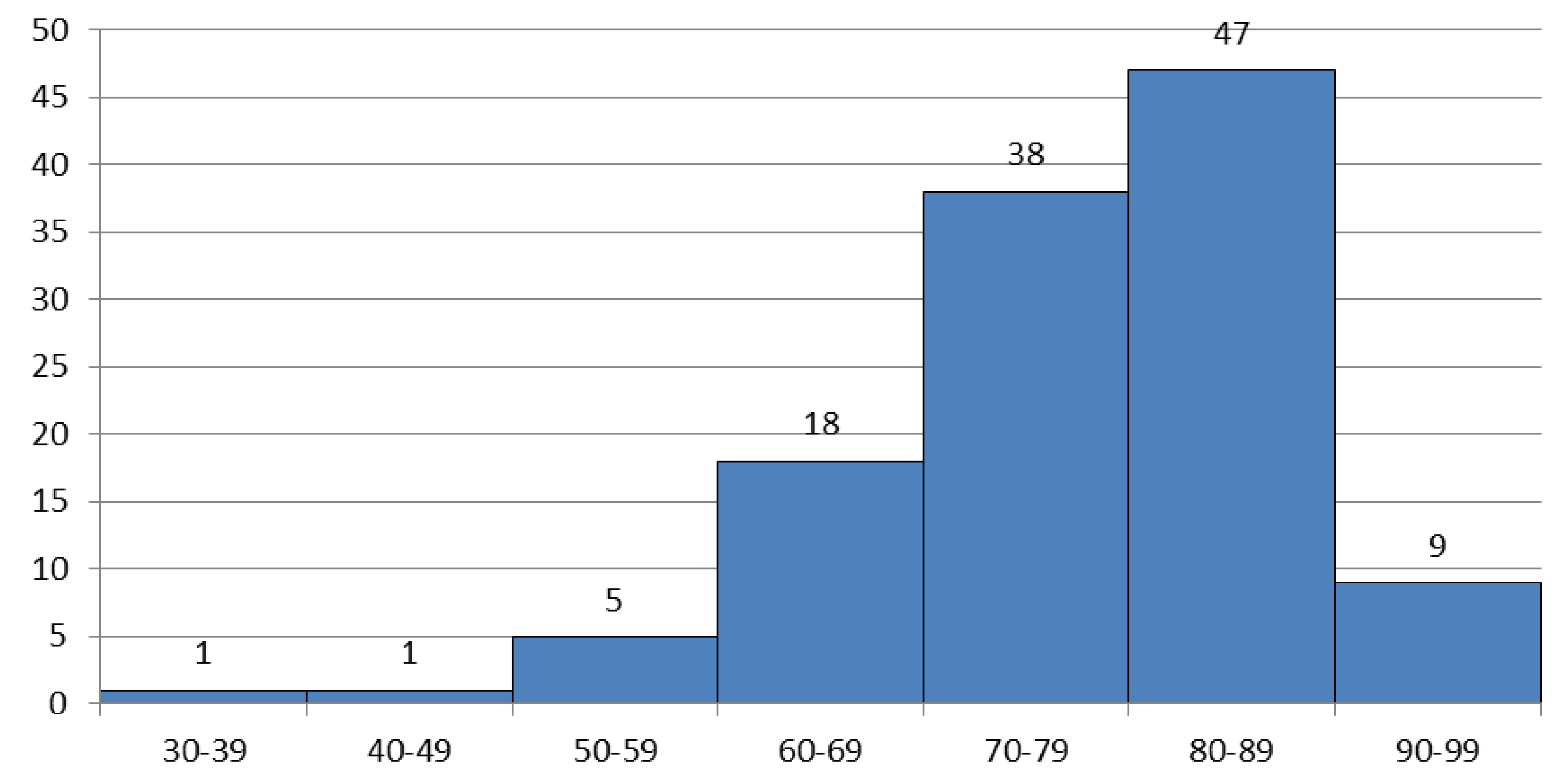
Richard Aldred, Gloucestershire Diabetic Eye Screening Programme

Programme overview

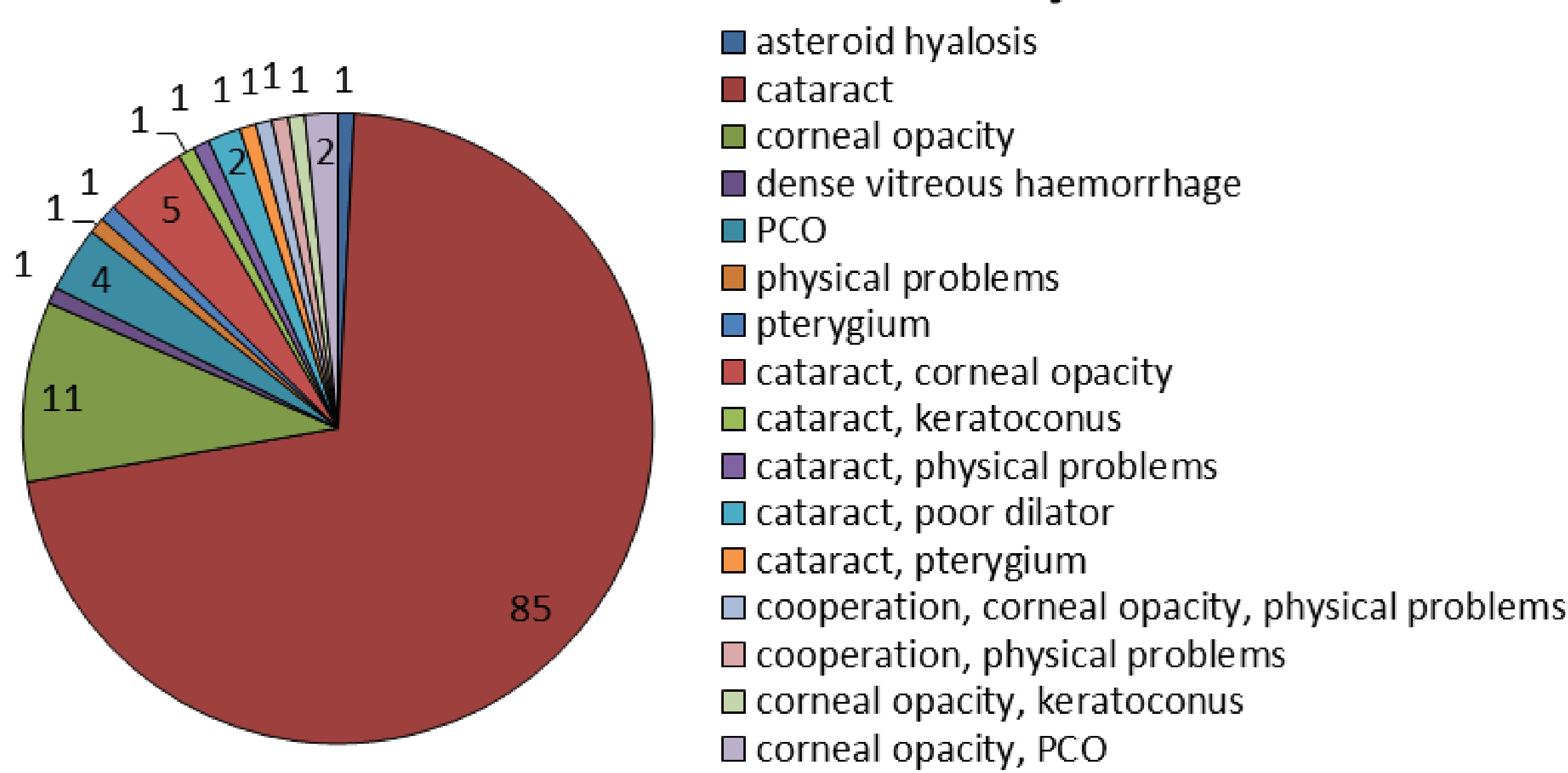


In the 2018/2019 year, the Programme's total population was 37,404. A total of 877 patients unassessable at screening were then examined by SLB. 119 of these patients were also unassessable at SLB. This poster analyses the reasons why the patients were unassessable at SLB, and the outcomes of these examinations.

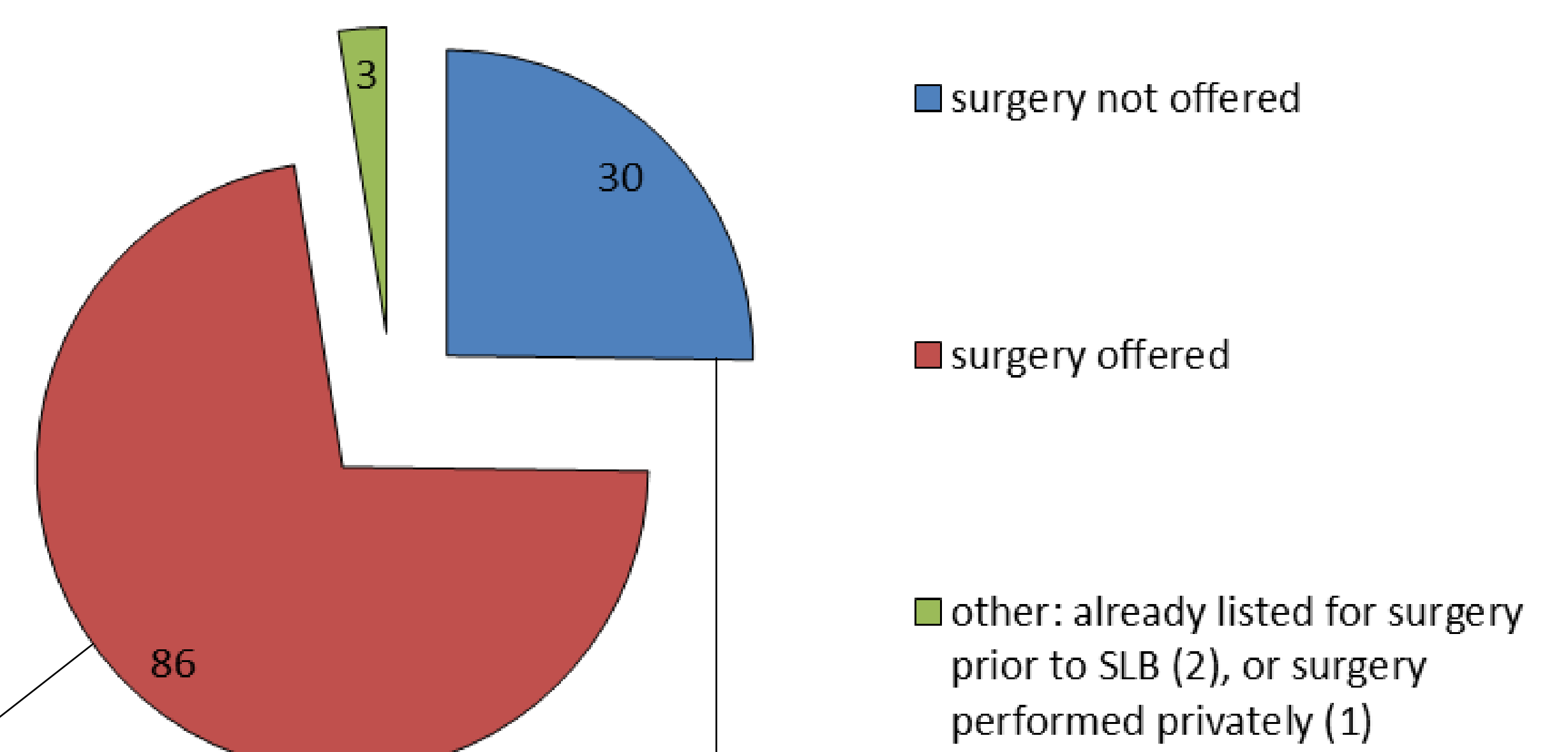
Number of patients by age



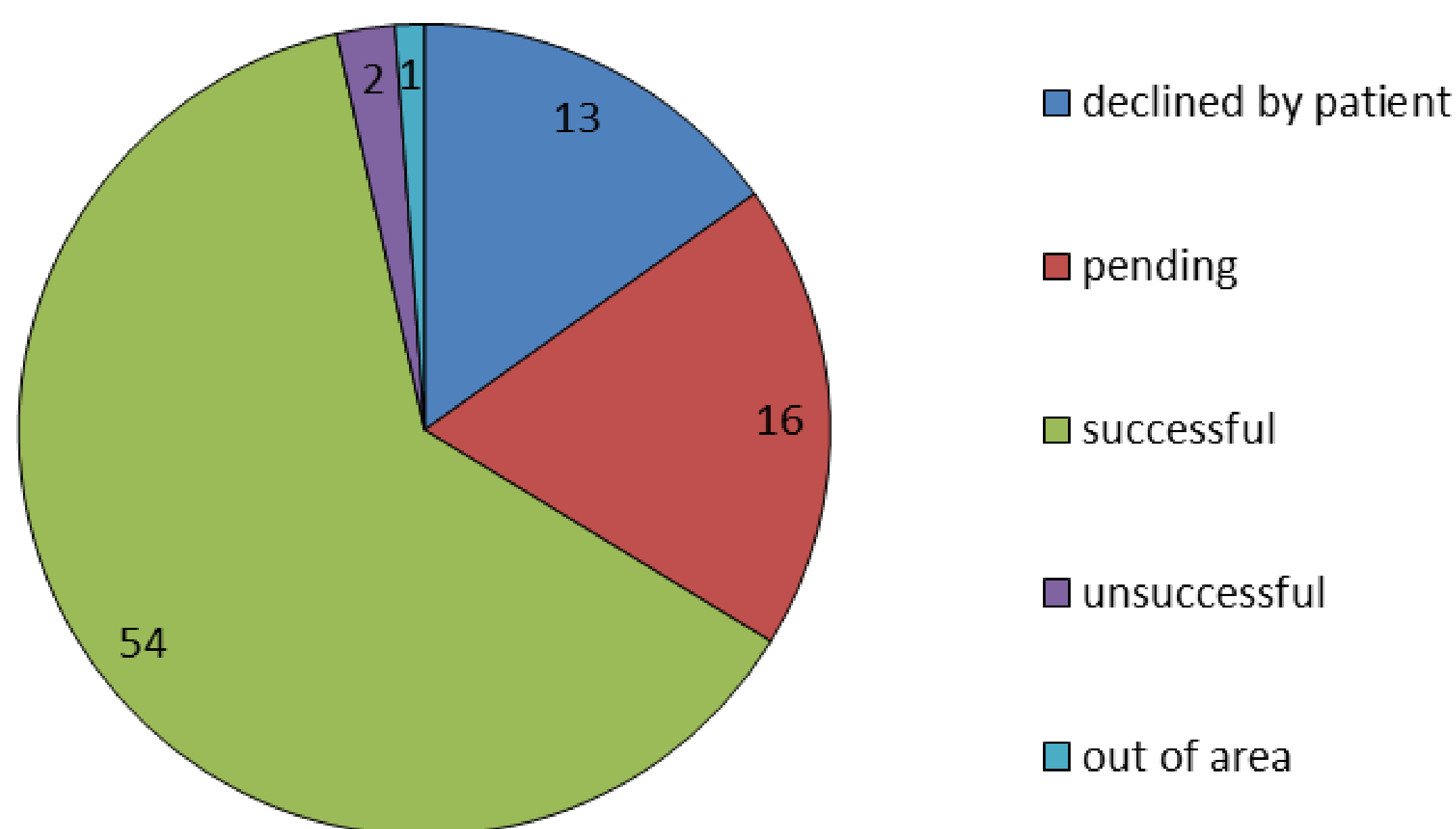
Reasons for unassessability



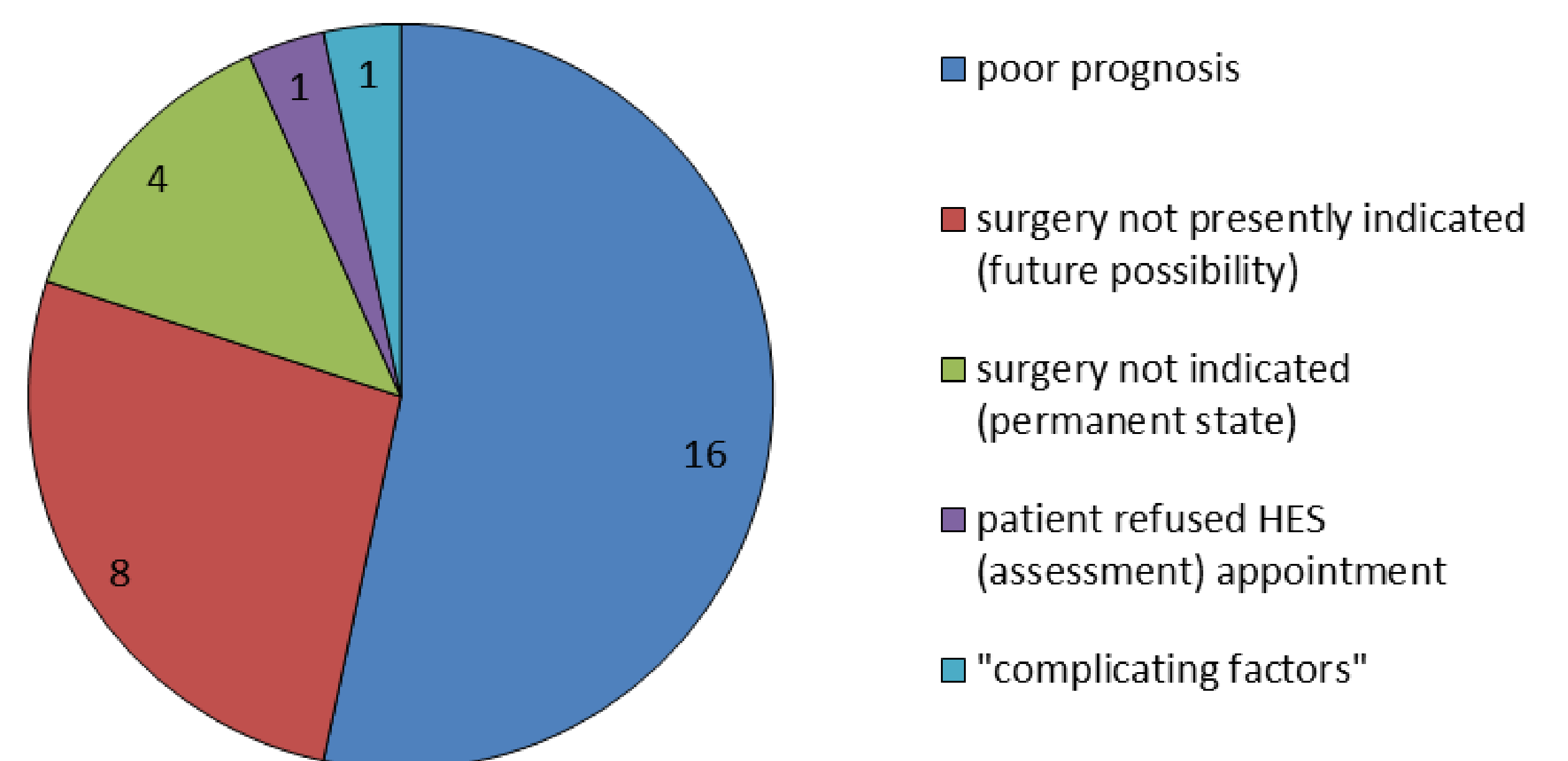
Result



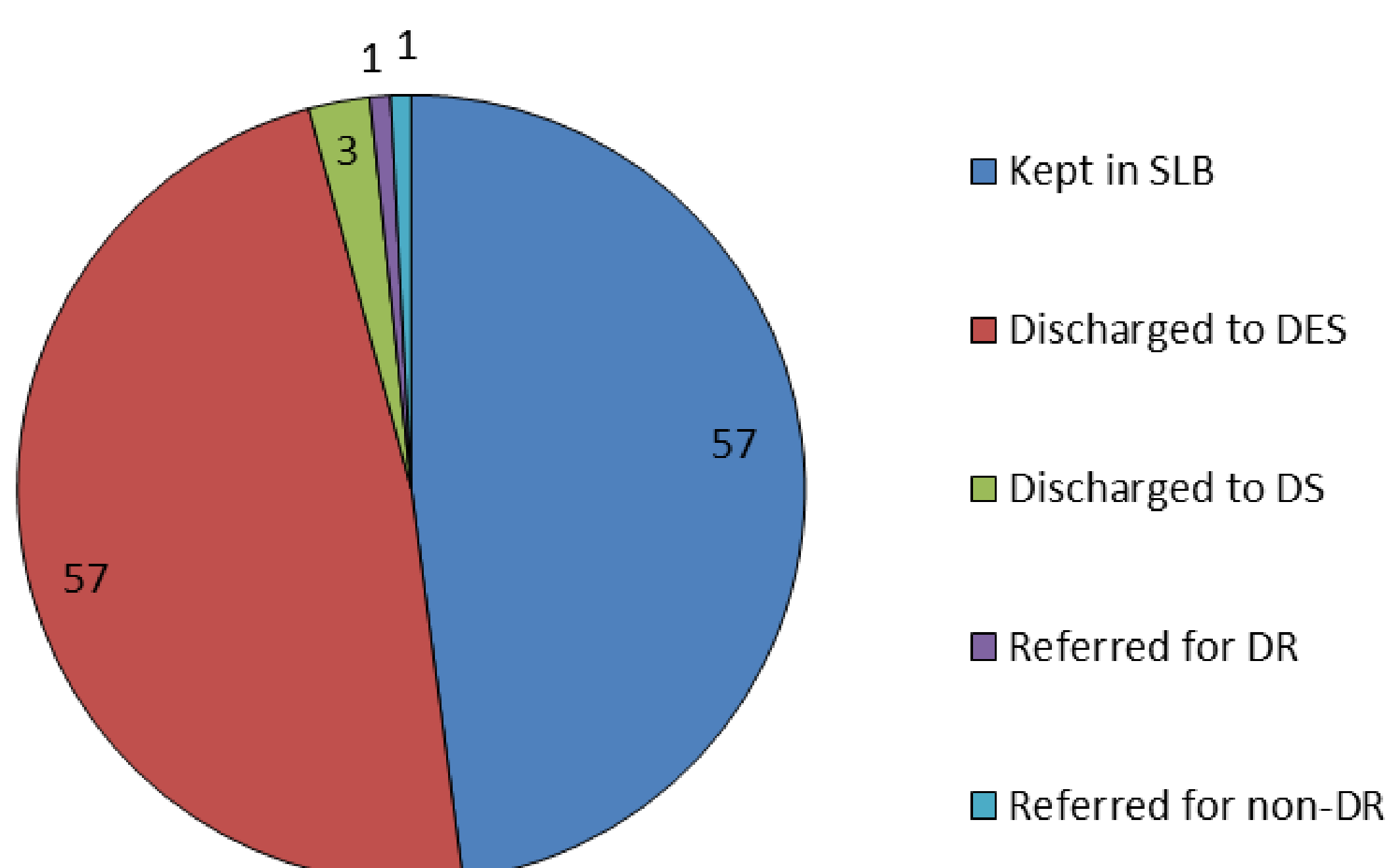
Where surgery offered



Where surgery not offered



Outcome



Findings

- 57 patients were kept in HES for continued DR assessment by SLB. The reasons making them unassessable are ongoing, making SLB the most appropriate option.
- 57 patients were discharged to DES annual recall following either successful surgery or instruction that screening should concentrate on the patient's assessable eye.
- This review identified that one patient discharged following successful cataract extraction was in fact unassessable due to physical problems; this patient was referred back to HES for continued assessment by handheld slit lamp.
- Three patients were discharged to DS for HES non-attendance.
- One patient was referred routinely to HES for DR. Prior to becoming unassessable due to cataract, this patient was seen in the R3S clinic, and was returned to this following cataract extraction.
- One patient was referred urgently to HES for non-DR. Following YAG laser to PCO, an OCT/OCT-A revealed wet AMD.