



Public Health
England

NHS

The new DES qualification..... what it means for you

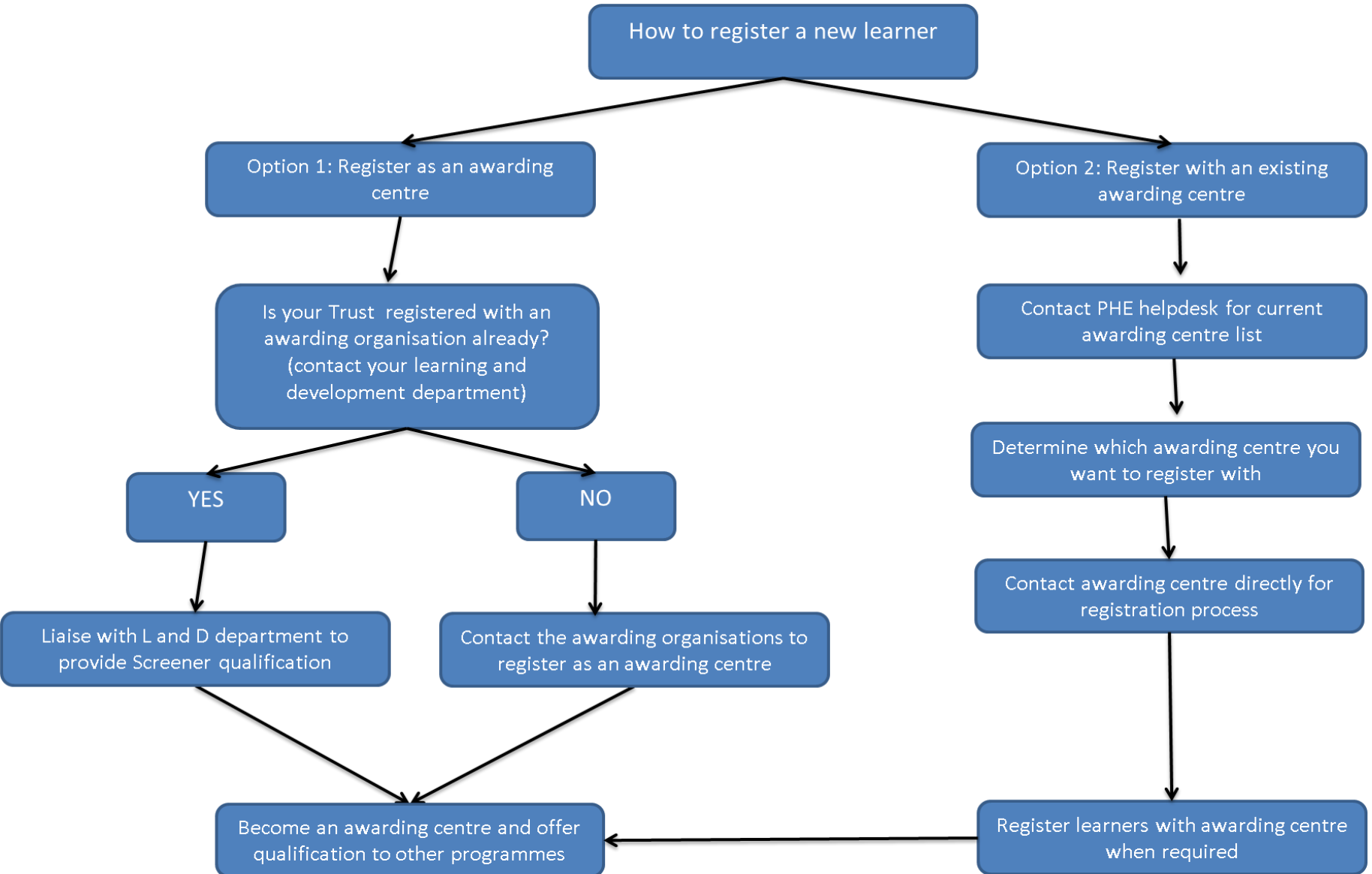
Patrick Rankin

Public Health England leads the NHS Screening Programmes

Agenda

- What will you need to do.....???
- Determine how to register staff on the screener qualification
- Register staff on the CAVA qualification
- Familiarise staff with the new qualification
- Develop strategy for delivering and assessing the mandatory units
- Utilise the Screening CPD website
- Join the PHE Screening blog!!

How to register staff on the qualification.....



Register staff on the assessor qualification

- Certificate in assessing vocational achievement (CAVA)
- Requirement for assessors to be able to demonstrate competency in assessing
- PHE Screening and NOCN have developed a streamlined process for existing C&G assessors
- Funded by HEE through PHE (2 per programme) in 2016/17
- Work based qualification
- Involves discussion with assessors from NOCN
- Outlining previous experiences in assessing and plugging any gaps to obtain CAVA
- Really useful development opportunity

Familiarise staff with new qualification

- Similar structure to the previous DES qualification
- based on a number of units and evidencing work based competency to an assessor
- learners provide evidence of competency via local assessments
- mandatory units
 - 13 mandatory units
 - provide an overarching understanding and competence to work in healthcare
- role specific units
 - 6 DES units
 - Undertake role specific units
- Different staff groups take different combination of units
- Previous qualification remains valid

Rules of combination

Units	Screeener	Grader	Screeener/grader	Optometrist	Assistant
13 mandatory units	✓	✓	✓	Principles of health screening unit only	
Anatomy and physiology of the eye	✓	✓	✓		
Understanding diabetes and diabetic retinopathy	✓	✓	✓	✓	✓
Prepare for diabetic retinopathy screening	✓		✓	role specific	✓
Undertake diabetic retinopathy imaging	✓		✓	role specific	
Detect retinal disease and classify diabetic retinopathy		✓	✓	role specific	
Understand how to safeguard the wellbeing of children and young people	✓	✓	✓		

Develop strategy for delivering and assessing the mandatory units

- 13 mandatory units
- Outline the basic skills and competencies for working in healthcare environment
- Some of the units are based on the care certificate requirements
- Numerous resources available
 - Skills for care/health websites
 - Local trust induction resources and evidence
 - Liaise with local L and D departments
- Useful to develop a plan for how to cover and assess these units
- Duplicate assessment evidence where appropriate

Screening CPD website

- Really useful webpages that outline the qualification
 - How to register a new learner
 - Contact details of the awarding organisations
 - Contact details of the awarding centres
 - <http://cpd.screening.nhs.uk/healthscreeenerqualification>

- PHE Screening blog

<https://phescreening.blog.gov.uk/>

- PHE Screening helpdesk

PHE.screeninghelpdesk@nhs.net

You are currently logged in as: patrick.rankin@nhs.net (Log out) | (Edit)

a a a | Print | Share | Bookmark | Translate:



You are here: [Programme Specific](#) > [Diabetic eye](#) > [Diploma for Health Screeners information and resources](#)

- Abdominal aortic aneurysm
- Bowel Cancer
- Breast
- Cervical
- Diabetic eye
 - Diploma for Health Screeners information and resources**
 - Courses
 - Graded image examples
 - Slit lamp examiner information
- Fetal Anomaly
- Infectious Diseases
- Newborn and Infant Physical Examination
- Newborn Blood Spot
- Newborn Hearing
- Prostate cancer
- Sickle Cell and Thalassemia

Diploma for Health Screeners information and resources

These pages will contain relevant information for the Diploma for Health Screeners (diabetic eye) when it becomes available

Pages in this section:

- [Qualification information](#)
- [Assessor and assessor qualification information](#)
- [Resources](#)

